

# The Perfect Match: SAC + SAP S/4HANA = Optimal financial planning

State-of-the-art planning template based on 8,000+ hours of project experience. Simplify your budgeting process with our SAP Analytics Cloud (SAC) financial planning project template. It uses standard CDS views from SAP S/4HANA for the seamless import of master and transactional data.



## For whom is this template aimed & what benefits does it offer?

- If your company is using **S/4HANA**, is acquiring or already has **SAC planning licences** or and you work in FP&A, **controlling and group accounting**, then this template is just right for you!
- The template offers a ready-made **planning template including a budgeting process** based on 8,000+ hours of project experience.
- In the **conception and planning phase**, you benefit from a quick start and a reduced susceptibility to errors.
- In addition, the standardisation and harmonisation leads to an increase in **efficiency** in financial planning.



## 1 template with 8 powerful functions

1. **Naming conventions** (e.g. folder structure, models and script objects)
2. **Team structure** (e.g. team and role concept)
3. **Authorisation concept / authorisation**  
Comprehensive solution approach for permissions and authorisation
4. **Multilingualism**  
Support for multilingualism at data and model level
5. **Model**
6. **Standard core data service views** (CDS views)
7. **Input masks and reports**
8. **Calendar process** (automation of the budget process)

*"In more than 10 planning projects with an average time expenditure of 800 hours, my team and I have gained valuable insights that have shown us how successful and efficient financial planning can be realised. We have transferred this accumulated knowledge into our template!"*



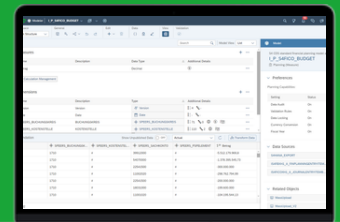
Philipp May  
Senior Analytics Berater

Use our SAC financial planning project template for efficient financial planning! It speeds up the project start with reusable, clear components and instructions.

**Find out more now!**

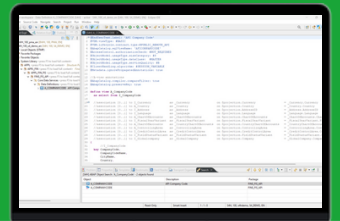
**Philipp May**  
philipp.may@s-peers.com

s-peers AG, Lohstampfestrassse 11, CH-8274 Tägerwilten, [www.s-peers.com](http://www.s-peers.com)



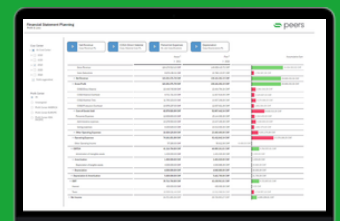
### Model

- Base model
- Dimensions including master data import
- Import and export jobs for transaction data



### Standard Core Data Service Views

- Overview of CDS views
- CDS views for master and transaction data
- Relevant Data Services



### Input masks and reports

- Input masks incl. app for the administration of power user tasks
- Preparation of budgeting process
- Data loads
- Execution of data actions